

# Build on the power of our network.™

Serving distribution and warehouse clients with optimal real estate and supply chain solutions worldwide.



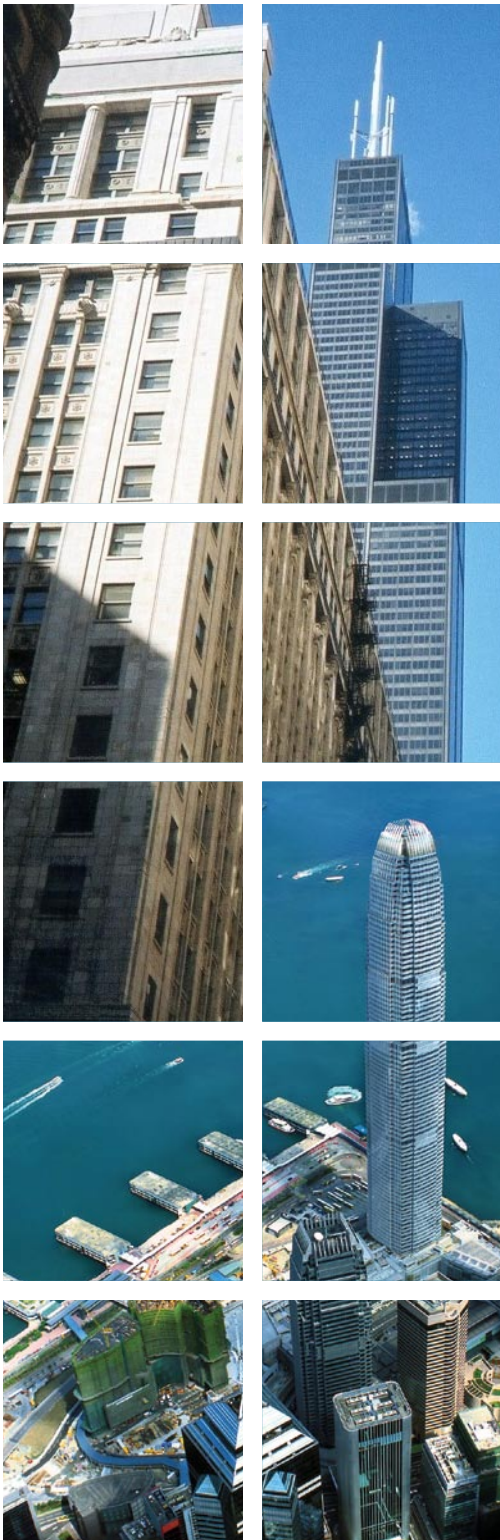
**NAI Global**™

Commercial Real Estate Services, Worldwide.

Logistics

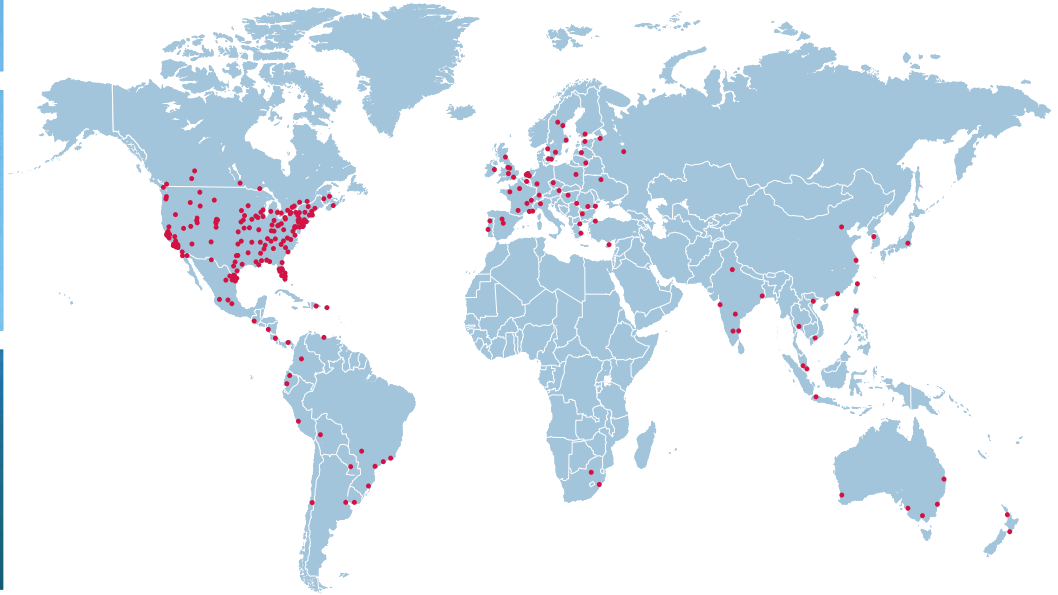
[www.naigloballogistics.com](http://www.naigloballogistics.com)

tel 866 985 4500



# NAI Global at a Glance

NAI Global is different by design as it is the world's only managed network of commercial real estate firms. At the core of our network is an exceptionally unique structure. NAI Global supports the NAI network of 5,000 real estate professionals working out of 350 offices in 45 countries spanning the globe. Our structure enhances member relations and advises on corporate services, finance and investing, communications, and the very best innovative technology and operations.



The support provided by NAI Global truly sets us apart in the industry. We work together – share best practices and processes – and effectively harness business intelligence that helps our clients strategically optimize their assets. Last year, NAI offices around the world completed transactions worth over \$40 billion. We also manage over 200 million SF of space.

NAI's strategic vision is to provide the global reach clients need through offices in leading markets throughout the world, together with the local knowledge that can only come from independently owned companies in those markets. To this combination of global reach and local knowledge, NAI adds a global management system along with a robust technology infrastructure to deliver consistent service to clients – whether their real estate needs are around the corner or around the world.



Commercial Real Estate Services, Worldwide.

Logistics

[www.naigloballogistics.com](http://www.naigloballogistics.com)

tel 866 985 4500

# NAI Global Logistics

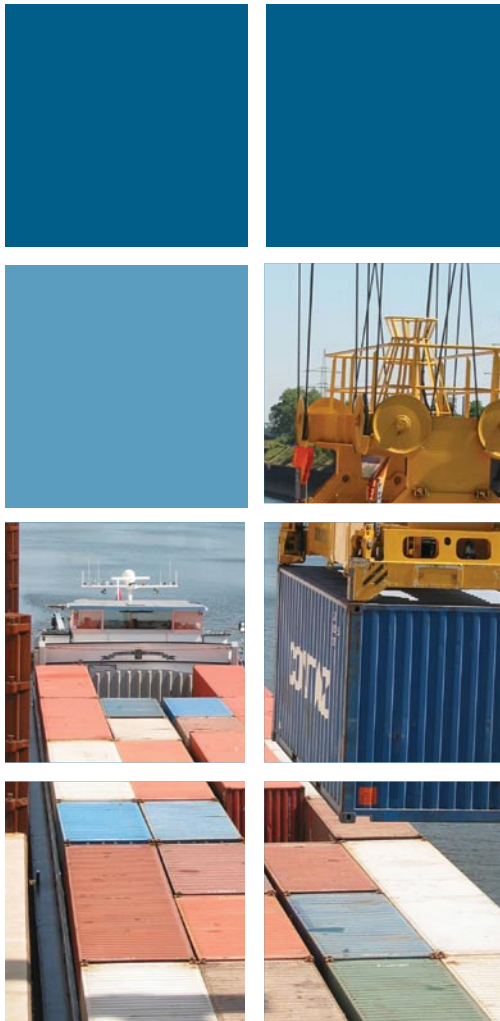
NAI Global Logistics is a specialty practice within NAI Global. Our logistics team of professionals provide real estate and supply chain solutions to distribution and warehouse companies whose distribution and cross-dock facilities are critical to their success. Our team concentrates on the global supply chain, transportation capacity, and energy concerns which enables us to position your real estate as a competitive advantage.

Our clients receive dedicated team service with single-point-of-contact accountability so that their needs are thoroughly assessed and understood, and strategic plans are well developed and executed.

NAI Global Logistics directors focus on the supply chain/logistics elements that dictate and justify site selection; including rail, domestic intermodal, international intermodal, inland ports, truckload and foreign trade zones. We are equipped to negotiate the most favorable economic terms in the most expedient manner, including tax and labor incentives.

Our active involvement in global logistics trade associations enables us to remain apprised of trends, technological innovations and legal issue impacting the marketplace. We also take pride in holding memberships to the prestigious professional designations bestowed by:

- *Council of Supply Chain Management Professionals (CSCMP)*
- *Warehouse Education Research Council (WERC)*
- *The Society of Industrial and Office Realtors (SIOR)*
- *The Commercial Investment Real Estate Institute (CCIM)*
- *The National Association of Industrial Parks (NAIOP)*
- *The Association of Industrial Real Estate Brokers (AIRE)*
- *Urban Land Institute (ULI)*



## Scope of Services

### *Global Supply Chain Consultation*

- Capacity
- Energy
- Transportation

### *Transportation*

- Drayage Analysis
- Hours of Service (HOS) Legislation

### *Foreign Trade Zone Consulting*

- Foreign Trade Zone Benefit Analysis
- Foreign Trade Zone Designation / Activation

### *Fair Market Value Analysis*

- Land Valuation
- Building(s) Valuation
- Building & Improvement Valuation

### *Sale - Leasebacks*

- Institutional Investors
- Private Investors
- Market Comparables

### *Strategic Pre-Development Services*

- Site Evaluation Assistance
- Land Acquisition Support & Technical Due Diligence
- Permitting & Entitlements Acquisition
- Economic Incentive Identification, Negotiation & Acquisition
- Financial Analysis of Alternatives
- Purchase vs. Lease Analysis

### *Retrofit-Expansion-Division of Existing Facility*

- Inspection Services
- Competitive Bidding of Required Work
- Construction and Improvement Supervision

### *Building Optimization*

- Size Analysis
- Pallet Optimization
- Efficiency Calculations
- Labor Analysis

### *Site Selection Analysis*

- Site Selection Criteria
- Development
- Analysis & Selection
- Environmental & Wetland Guidance
- Due Diligence
- Acquisition & Disposition
- Annexation & Zoning

### *Build To Suit Analysis & Planning*

- For Lease or For Sale
- Facility Specifications
- Comprehensive Bidding or Design Build Construction
- Expansion Planning
- Future Marketability Analysis

Smart real estate decisions can improve costs and increase efficiency. **Just ask some of our clients:**

- Airborne Express
- American Suzuki
- Associated Packaging
- Avery Denison
- Best Buy
- Black & Decker
- Bose Corporation
- Circle International
- Clorox Company
- Cooper Industries
- Cumberland Material
- Cummins
- Emerson Electric
- FMC Corporation
- GENCO Distribution
- General Tire
- Grainger
- GSK
- Hancock Fabrics
- Harlem Furniture
- Hayworth, Inc.
- HTI International
- Heilig-Myers Furniture
- Henkel Consumer Adhesives
- Hewlett-Packard
- IKEA
- Ingersoll-Rand
- International Paper
- Keebler
- Keystone Lemoyne Products
- Kintetsu World Express
- Lane Furniture
- Mack Trucks
- McKesson HBOC
- Menlo Logistics
- Motorola
- Mygrant Glass
- Pacer International
- Philips Electric
- Publisher West Group
- Quality Distribution
- Roadway Express
- Sanyo Logistics
- Sealy Mattress
- Sears Logistics
- Services
- Staple Cotton
- Steelcase, Inc.
- Techno Steel
- The Home Depot
- Thyssen Krupp
- Tyco Electronics
- US Food Service
- W.W. Grainger
- Wagner Industries
- Wal-Mart
- WOW Logistics

**NAI Global**™

Commercial Real Estate Services, Worldwide.

Logistics

[www.naigloballogistics.com](http://www.naigloballogistics.com)

tel 866 985 4500